

DEMONTAGE OPERATEUR PORTE

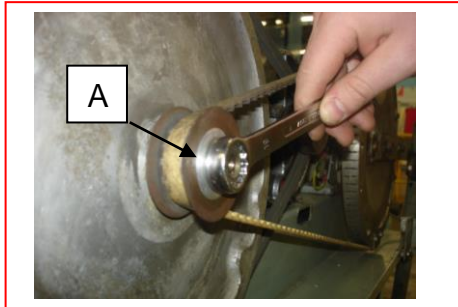
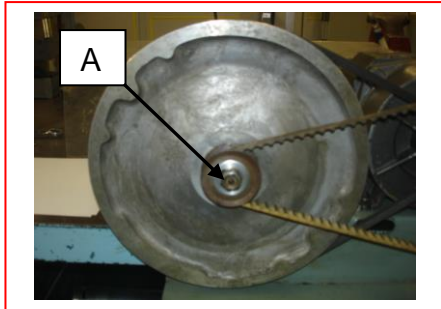
1 Préparation de l'outillage



Préparation des outils

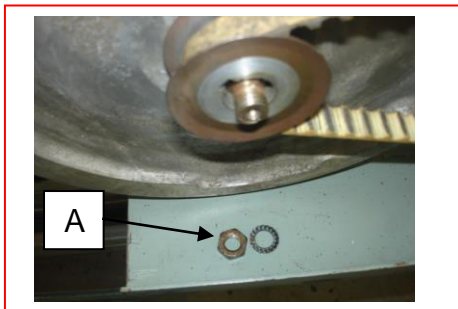
Clés 8, 14,
17,19
Extracteur et
massette

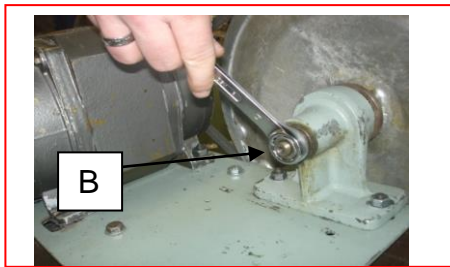
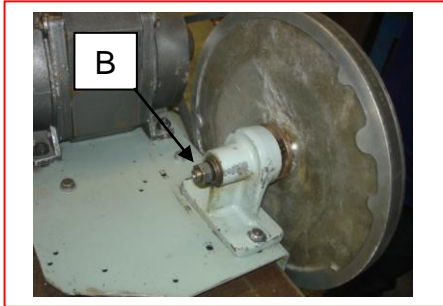
2 Démontage des poulies
1



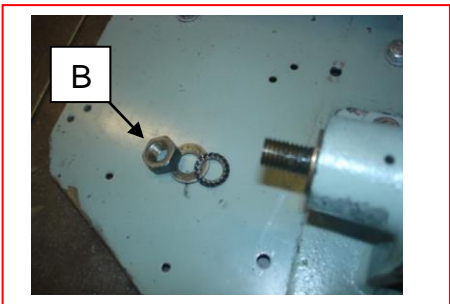
Dévisser l'écrou A

Clé de 19

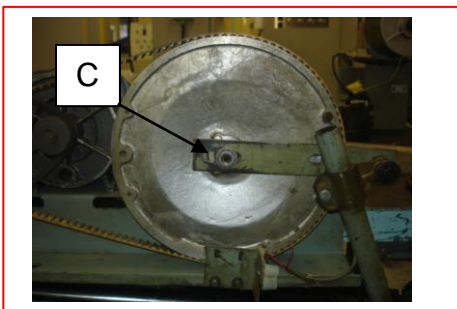




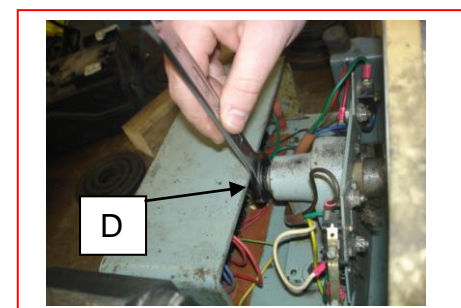
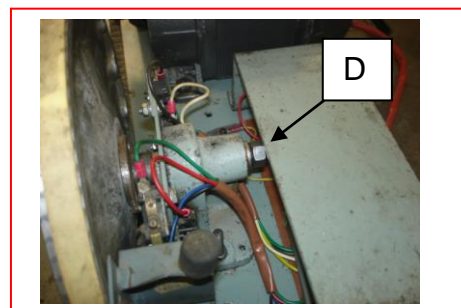
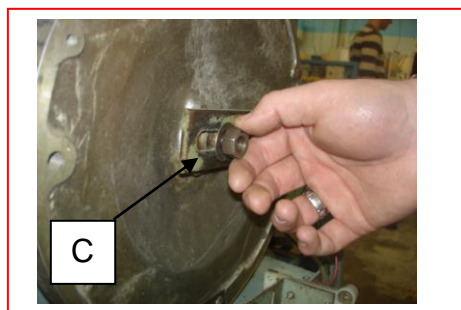
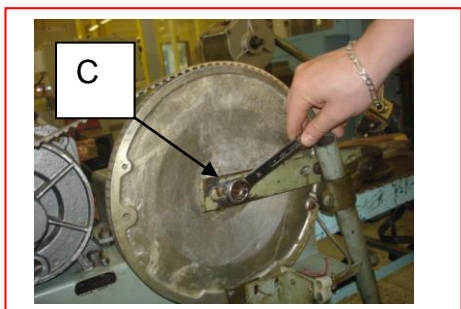
Dévisser l'écrou B Clé de 19



3 ● Démontage des poulies
2



Dévisser l'écrou C Clé de 19

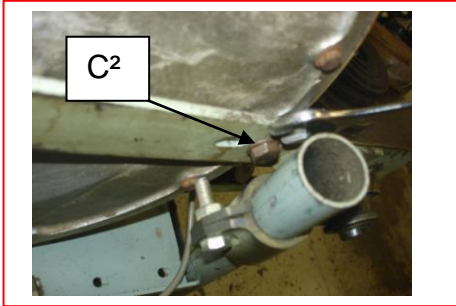


Dévisser l'écrou D

Clé de 19

4

Démontage du bras de porte

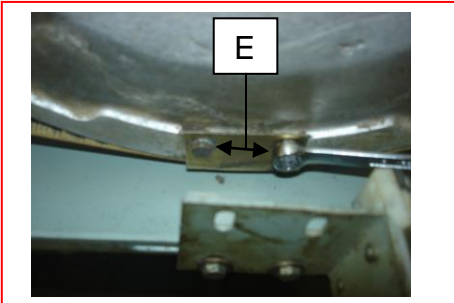


Dévisser la vis C²

Clé de 14

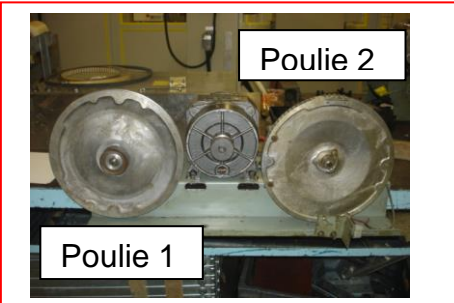
5

Enlever les courroies



Dévisser les deux vis E

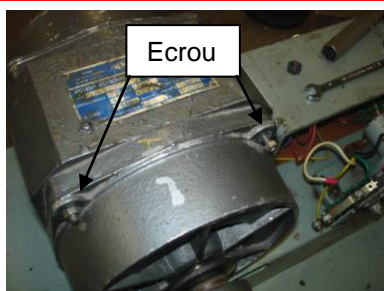
Clé de 8



Les courroies son enlever

7

Démontage du support de bobine



Enlever les 4 tirants du moteur
4 Erous

Clé de 8



Enlever les 4 vis bloc moteur

Clé de 17



Enlever la poulie moteur

Extracteur



Enlever le Carter de bobine

A la main



Enlever le rotor

A la main



Enlever le roulement 1

Extracteur



Enlever le roulement 2

Extracteur